

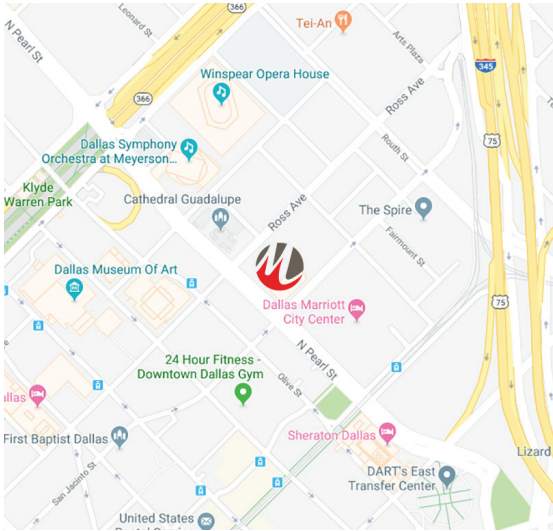


## MCGINNIS LOCHRIDGE

### Directions to Our Dallas Office from East and West Dallas

Chase Tower | 2200 Ross Ave., Ste. 4900E, Dallas, TX 75201

*The garage entrance is located off Ross Ave.*

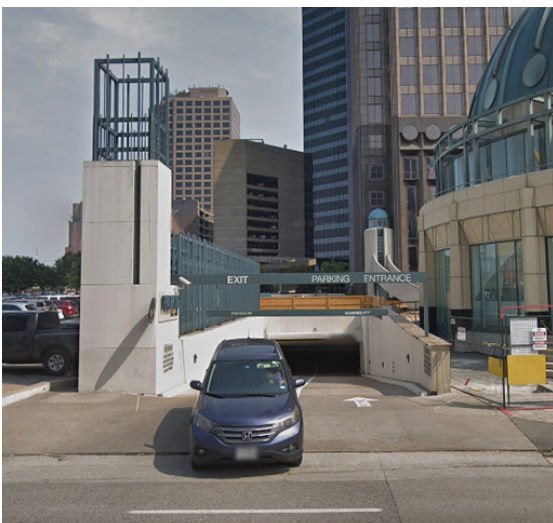


#### From East Dallas

- From I-30, take US 75 North
- Take Exit 286A toward Waco / Denton
- Merge onto Woodall Rodgers Freeway
- Take the St. Paul Street exit
- At the stoplight, turn left onto North St. Paul Street
- In 0.2 mile, turn left onto Ross Avenue
- The entrance to the parking garage will be on your right.

#### From West Dallas

- Take 183 East to I-35E South
- Take Exit 429A toward Houston / McKinney
- Merge onto Woodall Rodgers Freeway
- In 0.6 mile, take the Pearl Street exit
- Merge onto Olive Street
- Turn right onto Woodall Rodgers Freeway
- Take the first right to turn onto Pearl Street
- In 0.2 miles, turn left onto Ross Avenue
- The entrance to the parking garage will be on your right.



#### Parking at Chase Tower Garage

- Enter the garage and take a ticket at the gate. Please bring the ticket in with you — we will validate your ticket at reception on the 49th floor.
- Head towards the elevators located in the center of the Chase Tower Garage and take the elevator up to the ground floor.
- From the lobby, take the Sky Lobby Elevators to the 40th Floor. The elevator button will be labeled “SL.”
- Exit the elevator, walk towards the sky lobby, and turn left.
- Take the East Bank elevators to the McGinnis Lochridge reception on the 49th floor.

*Please present reception with your parking ticket for validation.  
(Note: The Chase Tower garage has a 6'11" clearance height.)*